



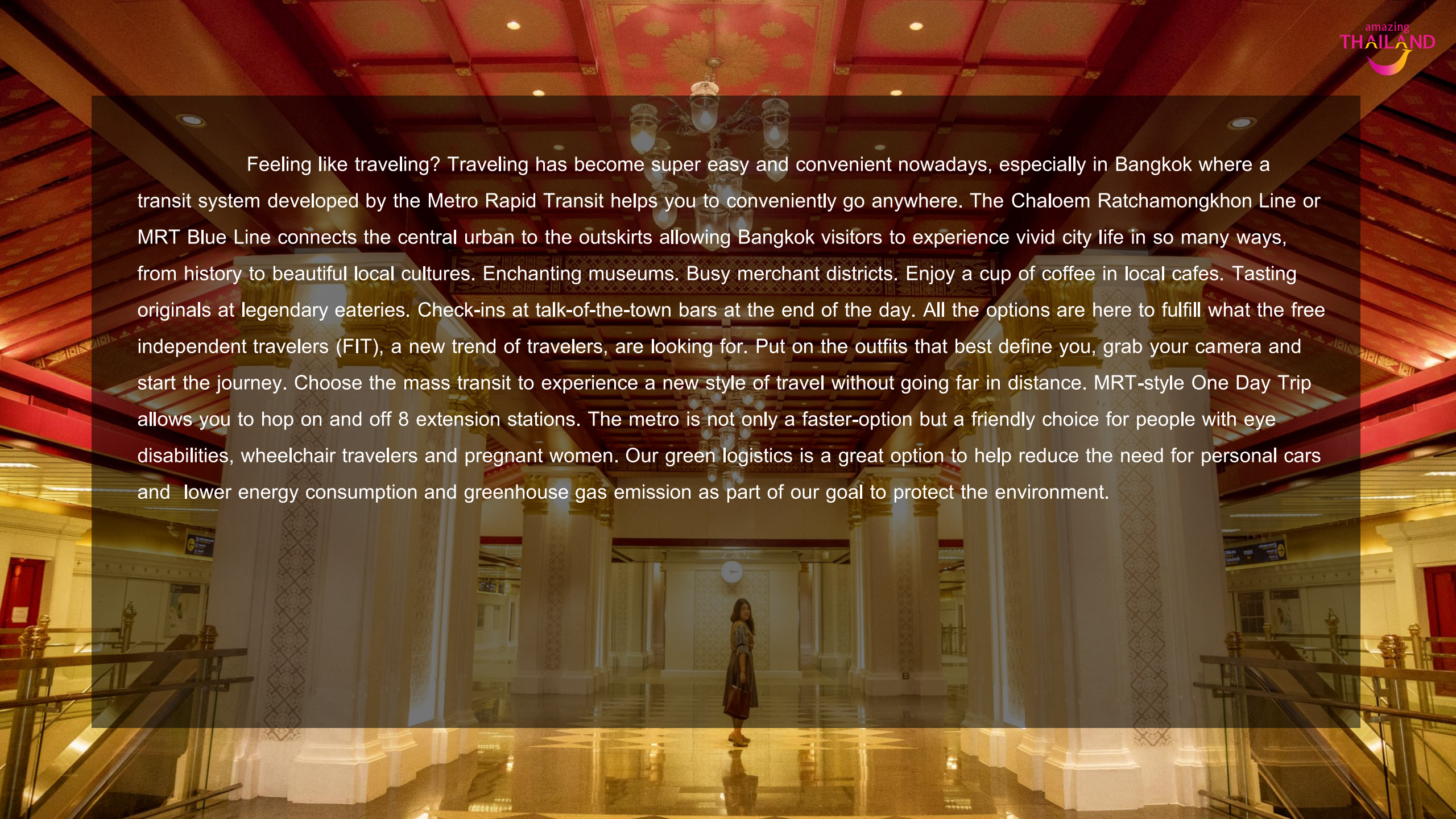
# Explore new tourist hotspots Around 7 new MRT stations



---

by Tourism Products and Business Department

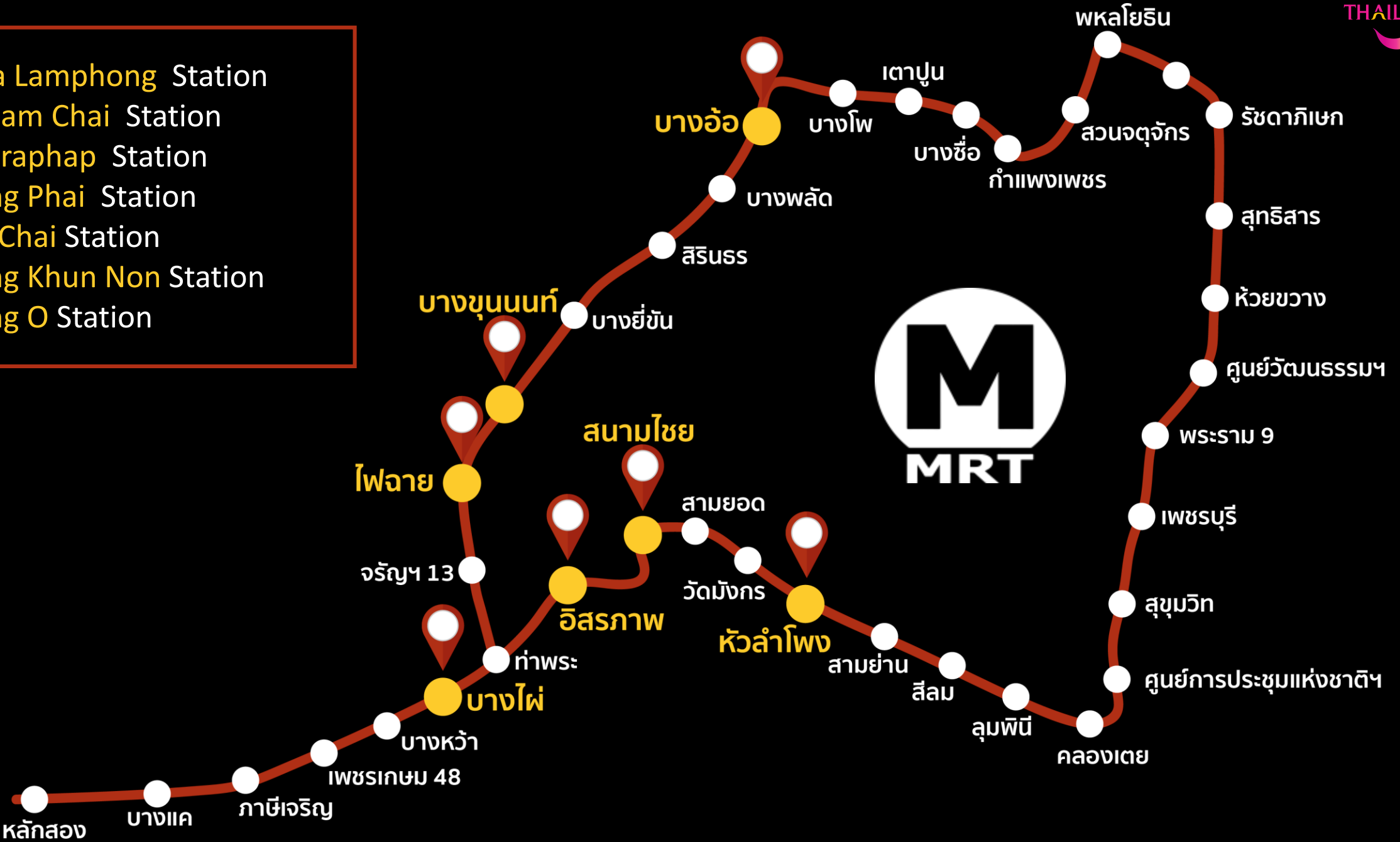


A woman in a long dress stands in the center of a grand, ornate train station. The station features white columns with intricate patterns, a red ceiling with gold accents, and a polished floor that reflects the lights. The scene is illuminated by warm, golden light, creating a luxurious and historic atmosphere.

Feeling like traveling? Traveling has become super easy and convenient nowadays, especially in Bangkok where a transit system developed by the Metro Rapid Transit helps you to conveniently go anywhere. The Chaloem Ratchamongkhon Line or MRT Blue Line connects the central urban to the outskirts allowing Bangkok visitors to experience vivid city life in so many ways, from history to beautiful local cultures. Enchanting museums. Busy merchant districts. Enjoy a cup of coffee in local cafes. Tasting originals at legendary eateries. Check-ins at talk-of-the-town bars at the end of the day. All the options are here to fulfill what the free independent travelers (FIT), a new trend of travelers, are looking for. Put on the outfits that best define you, grab your camera and start the journey. Choose the mass transit to experience a new style of travel without going far in distance. MRT-style One Day Trip allows you to hop on and off 8 extension stations. The metro is not only a faster-option but a friendly choice for people with eye disabilities, wheelchair travelers and pregnant women. Our green logistics is a great option to help reduce the need for personal cars and lower energy consumption and greenhouse gas emission as part of our goal to protect the environment.



- Hua Lamphong Station
- Sanam Chai Station
- Itsaraphap Station
- Bang Phai Station
- Fai Chai Station
- Bang Khun Non Station
- Bang O Station





## Hua Lamphong Station

---

From dawn till dusk  
at lively Hua Lamphong







**Hua Lamphong  
Station**



Exit

**1**

- Wat Traimit Withayaram Worawihan: 350 m.
- Daeng Racha Hoi Tod Walk: 270 m.
- Scoop Homemade Ice Cream: 300 m.
- Khao Moo Daeng Si Morakot: 350 m.
- Chong Kee Pork Satay: 350 m.
- Sun Wukong Shrine: 350 m.
- Odeon Circle: 450 m.

Exit

**3**

- Wall Flower Café: 400 M.
- EL Chiringuito: 400 M.
- Tep Bar: 420 M.





Exit  
**2**

## Thai Railway Museum

 170 m.

Learn the 123-year-old history of the State Railway of Thailand. Stories of rail transport are told through tools and equipment from different ages. A diorama corner portrays nostalgic vibe at a railway station.





Exit  
**1**

## Wat Traimit Withayaram Worawihan

 350 m.

One of Thailand's most precious Buddha images has made it into The Guinness Book of World Records as the World's Largest Golden Buddha statue.

## Yaowarat Chinatown Heritage Center

Exit  
**1**

 350 m.

Return to the time when Chinese migrants first arrived in Bangkok, the beginning of Yaowarat Road, and the legend of a Chinese voyage of “sheet and pillow case” to a wealthy “tycoon”







Exit

1

## Odeon Circle



450 m.

Appreciate the beauty of this Celebration Arch, a unique mix between Thai and Chinese art. This is the “Dragon’s Head” of Yaowarat where photographers come in their dozens to try and capture its majesty



Exit

1

## Kuan Yim Shrine



600 m.

A must-visit holy shrine in Yaowarat. Believers come here to ask for good health.



## Sun Wukong Shrine



350 m.

Exit  
**1**

Pray for success and be blessed with good fortune here at Sun Wukong Shrine, one of the holiest and most sacred places in Yaowarat.







Exit  
**1**

## Daeng Racha Hoi Tod

 270 m.

---

Hoi Tod and Aor Suan made in the traditional way, passed down from Generation to generation. No matter how long the queue is, the satisfying crunch of the first bite and the freshness of the oysters makes it worth the wait.



Exit  
**1**

## Mr Pung's Bagasse Roasted Duck

 260 m.

---

This place is the heavyweight champion when it comes to bagasse roasted duck and is the place you can find this dish in the area. Come to Mr Pung's for a culmination of three generations of deliciousness.



Exit  
**1**

## Chong Kee Pork Satay

 350 m.

---

This highly lauded satay specialist has been churning out quality meat on sticks in Trok Rong Moo for over 80 years. Tender pork and perfectly textured liver satay are the highlights here.





Exit  
**1**

## Trok Rong Moo Noodle

 300 m.

This is the place for some seriously spicy, kick-ass, Tom Yum noodles.

It's no secret that Thailand has the world's tastiest and most diverse roadside food and a visit to this noodle stall will confirm just why.



Exit  
**1**

## Khao Moo Daeng Si Morakot

 350 m.

This place has been in the culinary limelight for more than 70 years. Loaded with deliciousness and dishing out hefty portions, Khao Moo Daeng and Khao Moo Krob here are often talked about and deservedly so. The meat is grilled over charcoal, giving it a distinctive smoky aroma and elevating it above your average plate of pork. Don't miss out on this legendary eatery when visiting the area!



Exit  
**1**

## Scoop homemade ice cream

 300 m.

Sweet lovers just love coming to this lively ice cream shop. They offer great vibes and fresh ice cream in over 40 flavours.





Exit  
**1**

## Angel Pad Thai

 350 m.

Thai favourites Pad Thai and Hoi Tod entice passers by and locals alike.



Exit  
**1**

## Cheng Sim Ei Pang Klom Arom Dee

 300 m.

A secret recipe from China that has been wowing dessert lovers for over 60 years. You won't find a more authentic dessert experience than this!



Exit  
**1**

## Guay Tiew Pak Mhor Lhob Moom (Auntie Mout Steamed Rice Dumpling Noodle)

 290 m.

A hard to find but uniquely delicious dish, "Guay Tiew Pak Mhor". consists of paper thin pastry balls with various fillings, made on the spot and spooned into your bowl of soup. Find it located near Wat Traimit.





Exit  
**1**

## Jae Muay Kia Pork Porridge

 350 m.

Boost your morning mood with this filling pork porridge at Talad Noi's breakfast hot spot. Jae Muay has been serving up piping hot aromatic porridge paired with crispy golden Pa Tong Ko for over 60 years now.

## Pichai Kai Ton Chicken Rice

Exit  
**1**

 290 m.

Unbeatable! Hainanese chicken rice with a special recipe from the owner's own ancestors. Tender chicken served with charcoal-cooked rice. Great soup, superb sauce, in short all the elements needed for a dish of pure deliciousness.







Exit  
**1**

## Krapor Pla Nai Heng Trok Rong Moo



Jackpot! Fish maw soup cooked on a charcoal stove with aromatic Chinese herbs. Sold on a busy street yet as delicious as any high-end restaurant.



Exit  
**1**

## Tang Chua Li



Come and taste classical Hua Pla Mor Fai (fish head hotpot) in this acclaimed Chinese dining hall which is almost a century old.



# Wall flower cafe

 400 m.

Exit  
**3**

Spend a relaxing day off in this floral themed café, hidden deep in a neglected back alley of Yaowarat. A must-check-in spot for art lovers and those who love to chill.



Exit  
**3**

# Nahim Cafe

 400 m.

Open the door to a whole new world filled with candy colors and cute crafts.





Exit  
**3**

## Ba hao bar



450 m.

---

Sip cocktails and knock back craft beers at this colorful Chinese-style bar housed in a 70-year-old building.





Exit  
**3**

## Tep Bar

 420 m.

Explore, enjoy and experience! Feel the Thainess of this secretive bar in Nana, Yaowarat. This is a fun and colorful spot for night-lifers.

## EL Chiringuito

Exit  
**3**

 400 m.

Vintage vibes in this hip Spanish themed hang out







## Route Guide

- A:** Daeng Racha Hoi Tod
- B:** Khao Moo Daeng Si Morakot
- C:** Chong Kee Pork Satay
- D:** Trok Rong Moo Noodle
- E:** Wat Traimit Withayaram  
Worawihan
- F:** Odeon Circle
- G:** Sun Wukong Shrine
- H:** Wall flower café
- I:** Tep bar





## Bang Khun Non Station

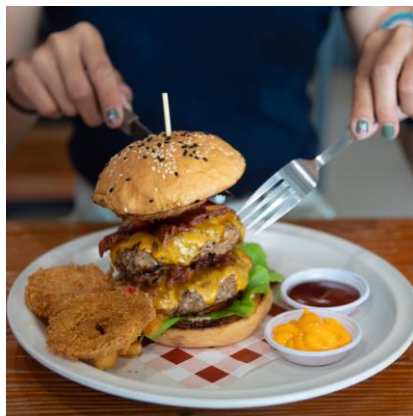
Fascinated and full in legendary Bang  
Khun Non







Bang Khun Non  
Station



Exit  
**1**

- Thon Buri Railway Station: 750 M.

Exit  
**3**

- Tang Liak Seng Crab Noodle: 450 M.
- Na Vayla PaPlern: 400 M.
- Tamlueng Noodle Nai Pheng: 1.2 KM.
- Glin Glua: 650 M.
- Wat Chao Arm: 1.6 KM.

Exit  
**4**

- Rai Khan Market 500 M.
- Wat Suwannaram Ratchaworawihan: 270 M.
- Sangsaja Factory of Khan-Long-Hin: 550 M.
- Thonburi Train Depot 850 M.



Exit  
**4**

## Local Museum of Bangkok ( Bangkok Noi)

 40 m.

---

Learn the background and history of Bangkok Noi district from the Ayutthaya Era right up to the present through this captivating exhibition





Exit  
**4**

## Wat Suwannaram Ratchaworawihan

 270 m.

---

This royal monastery is the heart of the Bangkok Noi community and houses a Buddha image in Maravijaya attitude which was forged in the Sukhothai period.





Exit  
**4**

## Sa-Nguan Dispensary

 450 m.

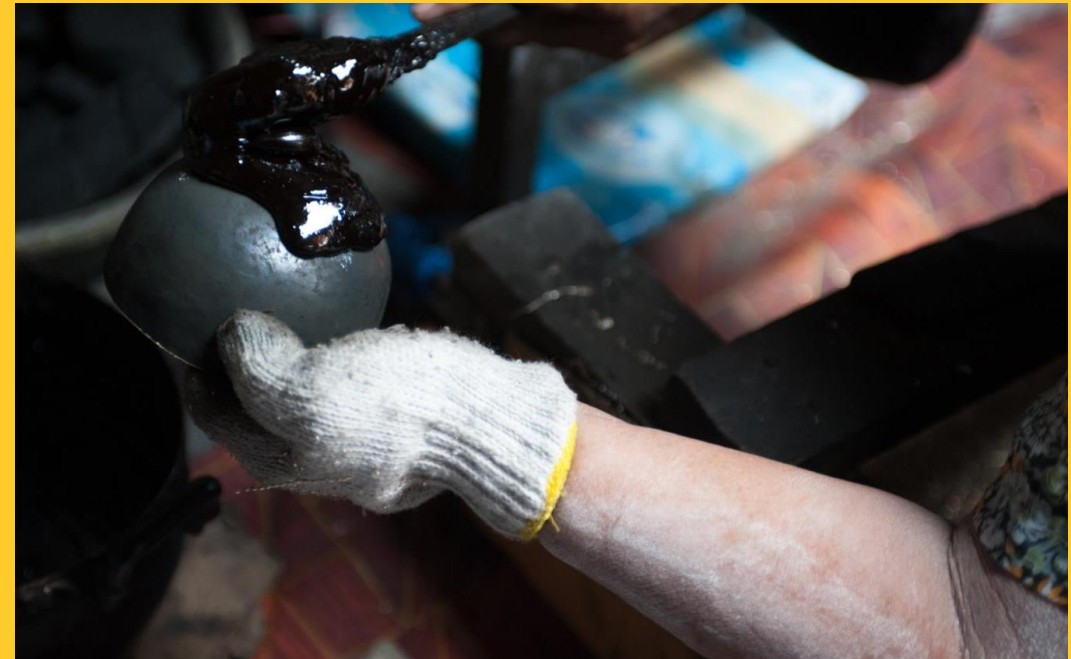
The ancient art of making herbal remedies that wise ancestors have passed down to a new generation of the Baan Bu community.

## Sangsaja Factory of Khan-Long-Hin

Exit  
**4**

 550 m.

“Khan Long Hin” or stone-polished bronze bowls are ancient Thai artefacts with great historical importance and this ancient craft is considered the soul of Baan Bu neighborhood.





Exit

1

## Thonburi Train Depot

Exit

4



850 m.

Thonburi Train Depot Lasting memories  
of a precious past present memories.



Exit

1

## Thon Buri Railway Station



750 m.

Check in at Kobori and Angsumalin's secret rendezvous spot! This  
station acts as the centre for both inbound and outbound trains.



# Rai Khan Market



500 m.

Exit  
**4**

Discover the true meaning of Rai Khan Market. Legend has it that it's the last market that single people visit because after coming here, they will find their soul mate. Come and find out for yourself if the old stories are true.

\*Opening Hours: The 1<sup>st</sup> and 3<sup>rd</sup>  
Saturday and Sunday of the month





Exit 3

### Phoem Phun Phochana

 10 m.

Authentic duck rice, just a few steps from Bang Khun Non MRT Station



Exit 3

### P.A.P. Ka Prao Wat Duang

 300 m.

Pad Ka Prao can be found anywhere, yet Pad Ka Prao with smiles and laughter can only be found here.



Exit 3

### Tang Liak Seng Crab Noodle

 450 m.

The legendary 80-year-old crab noodle. Fresh and firm hand-cracked crab meat meets noodles made to a secret homemade formula! Yummm!





Exit

3

## Glin Glua

 650 m.

---

An impressive international restaurant located in Bang Khun Non. Owned by an ex-chef from a well-known hotel who keeps the price down but the taste levels way up!



Exit

3

## Naingieb Fish Ball Noodle

 950 m.

---

The legendary noodles with fish balls in the neighborhood of the Tiger God Shrine. Famous for their perfect fish balls.



amazing  
THAILAND

Exit

3

## Nai Auan Noodle

 850 m.

---

Lovers of the fragrant ivy gourd leaf can find their heaven at this quaint noodle house in Bang Khun Non. If you can't quite decide what you fancy, Nai Auan has both noodles and rice combos



Exit  
**3**

## Humhoo (Soot Bunlue Loak)

 280 m.

Meet Bang Khun Non's authentic soymilk noodles, Humhoo (Soot Bunlue Loak). So tasty you can't stop at a single bowl!

## Salapao Wassana

Exit  
**3**

 400 m.

Chunky buns! A silky soft texture and fillings so plentiful that they all but spill out of the pastry. Giant steamed dumplings! Massive Mantou! Heavy in your stomach but light on your pocket so even the hungriest eaters can get their fill.







Exit  
**3**

## Nai Hok Suang Chicken Rice

 400 m.

Tried and tested flavours that will have you coming back for more. This is a real old school chicken rice place; tasty, wallet-friendly and with a menu offering two types of pork, duck and of course, chicken.



Exit  
**3**

## Yen Yen

 500 m.

Be cool with Yen Yen, the icy dessert shop where you can cool yourself down and delight in a selection of sweet ingredients. Yen Yen means cool cool but you can stop by for some superb desserts whether it's hot or cold, day or night.



# Nai Sung Fruit

Exit  
3



450 m.

The legendary preserved fruit merchant of Bang Khun Non.  
Tasty. Original. Authentic.



amazing  
THAILAND



Exit  
3

# Tamlueng Noodle Nai Pheng



1.2 Km.

Nai Pheng Noodle has been with Bang Khun Non  
for over a decade. These springy noodles with ivy gourd leaves are based  
on a generations-old recipe





Exit  
**3**



## Wat Chao Arm

 1.6 km.

Ask for blessings from King Taksin the Great at this centre for sacred Buddha images and holy items from all over the country.





Exit  
**3**

## Na Vayla PaPlern

 400 m.

A cozy, hidden café and hostel serving customers with care. Lose track of time while sipping cool drinks and tucking into some flavoursome desserts.

## Old Man Cafe'

Exit  
**3**

 1.4 km.

A cool industrial style café which doubles as a vibrant bar after sunset.







Exit  
**3**

## Chris Steaks & Burgers

 1.5 km.

---

Decadent burgers and belly-busting portions galore!



# Route Guide

**A:** Local Museum of Bangkok – Bangkok Noi

**B:** Wat Suwannaram Ratchaworawihan

**C:** Rai Khan Market

**D:** Sangsaja Factory of Khan-Long-Hin

**E:** Thonburi Train Depot

**F:** Thon Buri Railway Station

**I:** Phoem Phun Phochana

**J:** Salapao Wassana

**K:** Nai Sung Fruit

**L:** Tang Liak Seng Crab Noodle

**M:** Glin Glua

**N:** Tamlueng Noodle Nai Pheng

**O:** Chris Steaks & Burgers

**P:** Wat Chao Arm



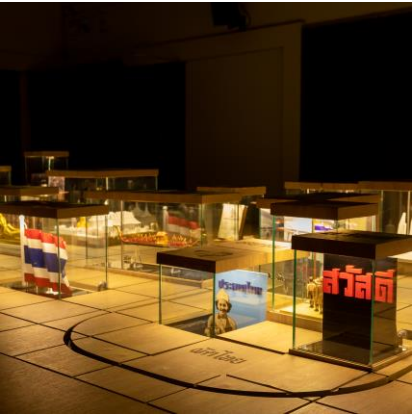


## Sanam Chai Station

Multicultural moments with The  
Kudichin Community







Sanam Chai Station



Exit 1

- The Grand Palace: 1.1 KM
- Museum Siam
- Wat Phra Chetuphon Wimon Mangkhalaram: 350 M.

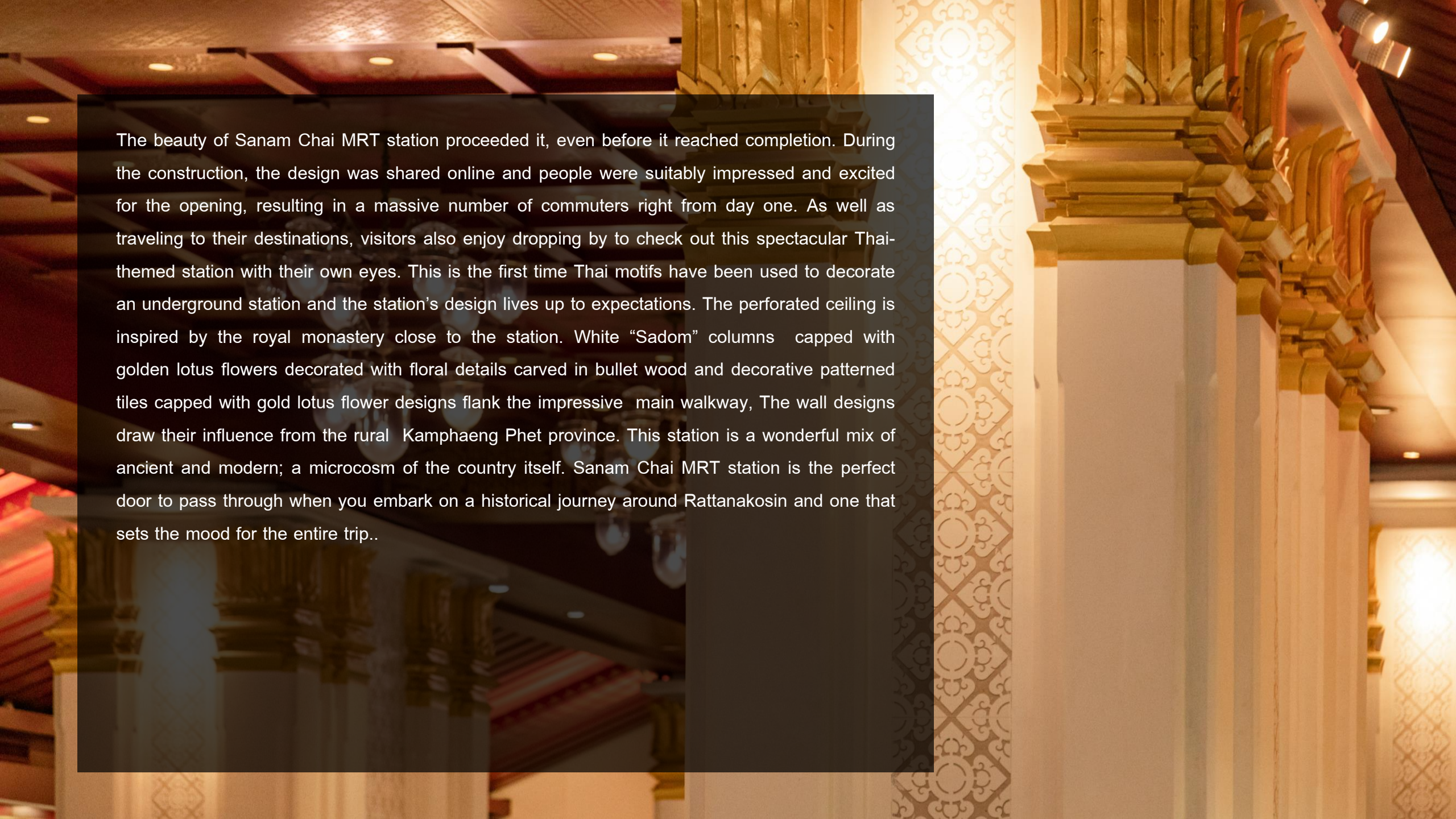
Exit 4

- Pak Khlong Talat (Flower Market) 210 M.

Exit 5

- Sieo Lang Restaurant: 120 M.
- Eagle nest rooftop bar': 550 M.
- Rongros Restaurant: 400 M.
- Tonkin Annam: 450 M.
- Ha Tien Cafe's Bangkok: 500 M.
- Wat Prayurawongsawat Worawihan: 1 KM.
- Santa Cruz Church: 750 M.
- Kian Un Keng Shrine: 650 M.
- Bang Luang Mosque: 1.3 KM.
- Wat Kalayanamitr Varamahavihara: 750 M.



The image shows the interior of the Sanam Chai MRT station, featuring white columns with golden lotus flower capitals and a perforated ceiling. The architecture is inspired by Thai motifs, including the royal monastery and rural Kamphaeng Phet province. The station is a mix of ancient and modern design, serving as a microcosm of the country.

The beauty of Sanam Chai MRT station preceded it, even before it reached completion. During the construction, the design was shared online and people were suitably impressed and excited for the opening, resulting in a massive number of commuters right from day one. As well as traveling to their destinations, visitors also enjoy dropping by to check out this spectacular Thai-themed station with their own eyes. This is the first time Thai motifs have been used to decorate an underground station and the station's design lives up to expectations. The perforated ceiling is inspired by the royal monastery close to the station. White "Sadom" columns capped with golden lotus flowers decorated with floral details carved in bullet wood and decorative patterned tiles capped with gold lotus flower designs flank the impressive main walkway, The wall designs draw their influence from the rural Kamphaeng Phet province. This station is a wonderful mix of ancient and modern; a microcosm of the country itself. Sanam Chai MRT station is the perfect door to pass through when you embark on a historical journey around Rattanakosin and one that sets the mood for the entire trip..





Exit  
**5**

## Kudichin Communit



: Pak Khlong Talat



100 m.: Wat Kanlayanamit Pier

---

Visit a 200-year-old community by the Chao Phraya river. See the beauty of bygone days when the Portuguese colonies relocated from Ayutthaya to settle in Bangkok.





Exit  
**5**

# Wat Kalayanamitr Varamahavihara

amazing  
THAILAND



: Pak Khlong Talat



100 m.: Wat Kanlayanamit Pier

A Thai temple in a Chinese community which harmoniously combines two different belief systems. The only temple in Thailand that possesses a principle Buddha image in a “Receiving Offerings” pose.

## Kian Un Keng Shrine

Exit  
**5**



: Pak Khlong Talat



10 m.: Wat Kanlayanamit Pier

Pay respect to the only Guan Yin image in work attire in Thailand. Appreciate ancient Chinese architecture and the complete fresco painting portraying stories from The Romance of the Three Kingdoms which won The Architectural Conservation Award from The Association of Siamese Architects Under Royal Patronage in 2008.





Exit  
**5**

## Santa Cruz Church



: Pak Khlong Talat



100 m.: Wat Kanlayanamit Pier

The oldest Catholic church in Bangkok, with eye-catching Neo-Classical and Renaissance architecture has been a vital place of worship for the Kudichin community for decades.



Exit  
**5**

## Bang Luang Mosque



: Pak Khlong Talat



500 m.: Wat Kanlayanamit Pier

The only mosque in Thailand built with Thai Buddhist architecture and winner of The Architectural Conservation Award for Sacred Places, Temples and Monasteries from Her Royal Highness Princess Maha Chakri Sirindhorn.



# Baan Sakulthong

Exit  
**5**



: Pak Khlong Talat



250 m.: Wat Kanlayanamit Pier

A wonderful old wooden house lovingly converted into a unique restaurant, steeped in tradition and serving royal Portuguese cuisine.



Exit  
**5**



: Pak Khlong Talat

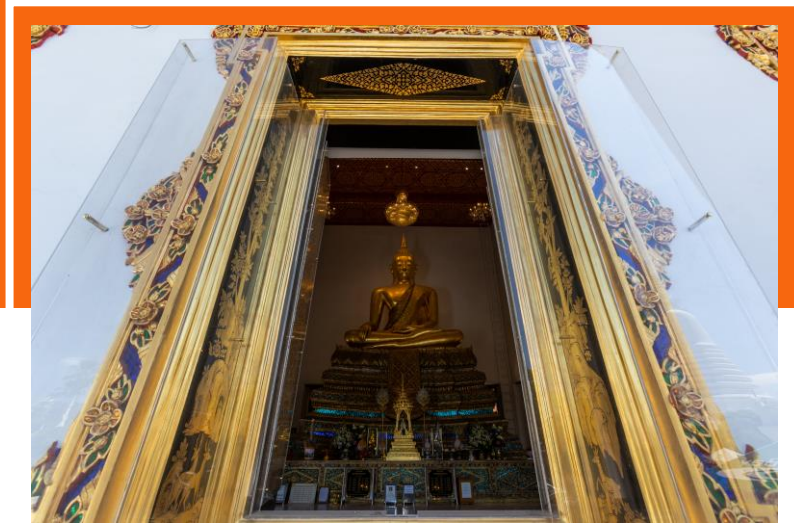


300 m.: Wat Kanlayanamit Pier

# Baan Kudichin Museum

Siamese-Portuguese culture, traditions, language, religion and foods from the Ayutthaya era to present day are gathered together in this learning center.





Exit  
**5**

## Wat Prayurawongsawat Worawihan



: Pak Khlong Talat



450 m.: Wat Kanlayanamit Pier

Phra Borom That Maha Chedi or the Great Stupa was granted a Cultural Heritage Conservation Award of Excellence from UNESCO. This is another temple by the river whose beauty is world renowned.



# Museum Siam

Exit  
**1**

Learn the roots of Thainess at this contemporary museum where you can stroll around, solve mysteries and collect new knowledge.







Exit  
**1**

## Wat Phra Chetuphon Wimon Mangkhalaram

 350 m.

Pay your respects to the greatest Reclining Buddha in the capital at this royal monastery of Rattanakosin. The temple's magnificence makes it one of Thailand's most unforgettable places of worship.

## Wat Ratchabophit Sathit Maha Simaram

Exit  
**2**

 750 m.

Check out the fascinating art of King Rama V's royal monastery and marvel at the resplendent mix of Thai and Western cultures. Don't miss the ancient Thai tradition named "Dern Tian – Tak Bat Dok Mai" or Triple Circumambulation and Floral Offerings Festival.







Exit

2

## Bangkok City Pillar Shrine



900 m.

---

The heart of the kingdom! A holy shrine with the country's fate hidden inside, built at the dawn of the Rattanakosin era.



Exit

1

## The Grand Palace

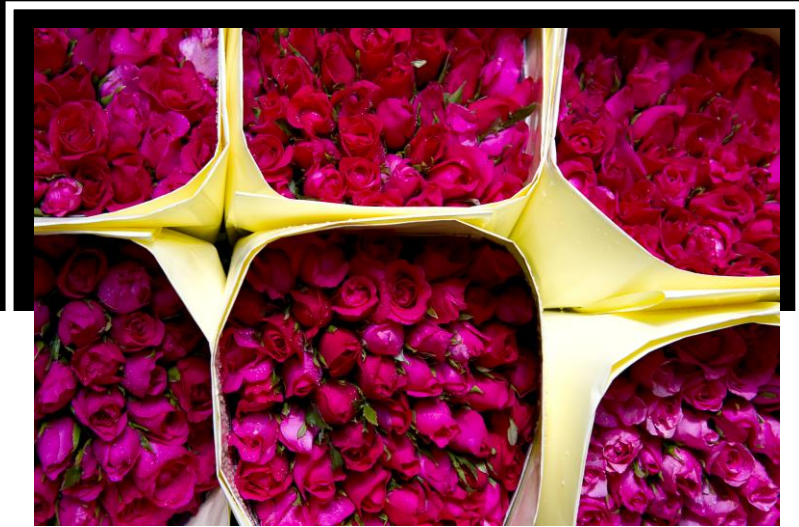


1.1 km.

---

Be mesmerized by the gorgeous architecture of Rattankosin's royal monastery. Thought by many to be the most precious jewel in Thailand's crown and a premier tourist destination for visitors from around the globe.





Exit  
**4**

## Pak Khlong Talat (Flower Market)

 210 m.

---

Fresh and fragrant around the clock at the oldest and biggest flower market beside the Chao Phraya river.





Exit  
**5** Thanusingha Bakery  
House



: Pak Khlong Talat



350 m.: Wat Kanlayanamit Pier

---

Chill and chomp on some  
“Khanom Farang Kudichin”, the no. 1 original  
Portuguese  
snack in this area.

Exit  
**5** Sieo Lang Restaurant



120 m.

---

The local’s favorite diner serving  
ample portions of great taste!

Exit  
**5** Tonkin Annam



450 m.

---

An authentic Vietnamese restaurant which can  
boast Michelin recognition for 2 consecutive  
years. (2018-2019) Original recipes and  
ingredients straight from Vietnam!

Exit  
**4**

## Farm to Table Organic Cafe

 110 m.



An organic themed café serving drinks and desserts straight from the heart. High-quality organic product are served with reasonable prices are the standard at Farm to Table.

## Black bear bake

 290 m.

Exit  
**5**

Chill in this cosy, cute café with an all-day breakfast and some freshly-baked pastries.







Exit  
**5**

## Blue Whale cafe'

 350 m.

---

Be dazzled by the striking indigo theme of this café. Food, drinks and tasty desserts are blue and whale themed, keeping with the ocean motif.



Exit  
**5**

## Food Route

 400 m.

---

A healthy restaurant in Tha Tien serving up food that's great for your taste buds and your waistline.



# Hatien Cafe

Exit  
**5**



400 m.

Another great coffee place in Tha Tien with great vibes. Stop by for some happiness in a cup!



amazing  
**THAILAND**



Exit  
**5**

# Make me mango



500 m.

A medley of mango dishes for fruit lovers.





Exit  
5

## Eagle nest rooftop bar'

 550 m.

---

Get romantic while sipping your favorite drink on this rooftop bar by Chao Phraya river. Impressive Phra Prang Wat Arun provides the perfect backdrop to your evening.



Exit  
**5**

## Long Tian

 700 m.

---

Lose your way at Long Tian rooftop bar and soak up one of the best views of the Chao Phraya river. Sip away as the sun sinks spectacularly behind Wat Arun.



Exit  
**5**

## A Pink Rabbit+ Bob

 450 m.

---

Warm and cozy café with home-baked treats and some unashamedly photogenic décor.



Exit  
**5**

## Rongros

 400 m.

---

A restaurant on the bank of Chao Phraya river with romantic, glass-house vibes.





## Route Guide

- A:** Sieo Lang Restaurant
- B:** Wat Kalayanamitr Varamahavihara
- C:** Kian Un Keng Shrine
- D:** Santa Cruz Church
- E:** Wat Prayurawongsawat Worawihan
- F:** Museum Siam
- G:** Wat Phra Chetuphon Wimon Mangkhalaram
- H:** The Grand Palace
- I:** Eagle nest rooftop bar

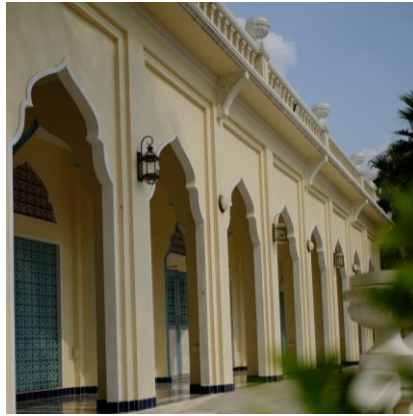


## Bang O Station

Take unseen photos of  
Bang o Mosque







**Bang O  
Station**

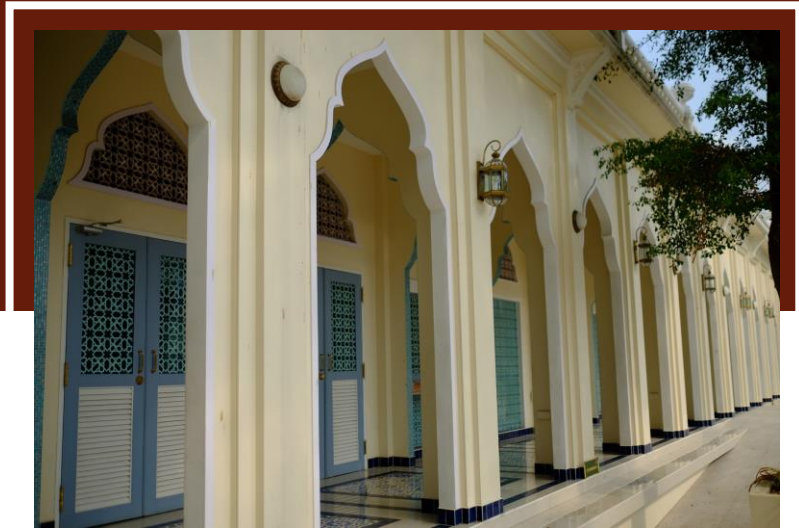


Exit  
**1**

- Bang Aor Mosque: 700 M.
- Ban Bang Or Coffee: 450 M.
- Wat Awut Wikasitaram: 1.5 KM.
- Bang Phlat Noodle: 1.2 KM.

Exit  
**2**

- Thale Phao Bang O: 450 M.



Exit  
**1**

## Bang O Mosque

 700 m.

A striking building situated by the Chao Phraya river, where it has stood for over a century and a symbol of unity and respect between races that awaits visiting culture lovers.





Exit  
**1**

# Wat Awut Wikasitaram

 1.5 km.

---

An old royal monastery by the Chao Phraya river with a combination of architectural themes from the Sukhothai, Ayutthaya and Rattanakosin eras.



# Ban Bang Or Coffee

Exit  
**1**

 450 m.

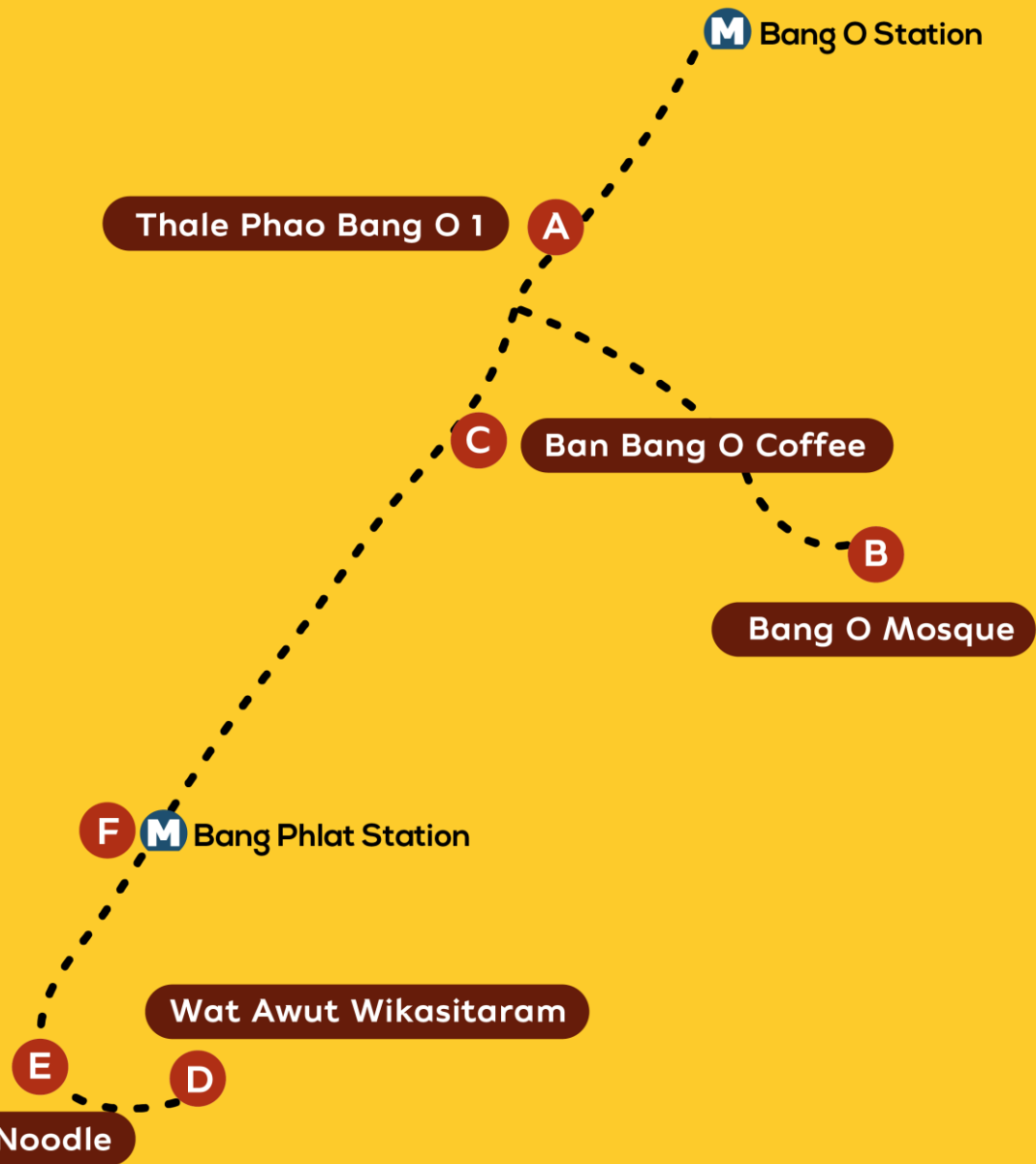
Indulge yourself with homemade food and drink which boosts both your heart and your health. Enjoy inventive Thai-European cuisine in a relaxing, homely ambience.



amazing  
THAILAND







## Route Guide

**A:** Thale Phao Bang O 1

**B:** Bang O Mosque

**C:** Ban Bang O Coffee

**D:** Wat Awut Wikasitaram

**E:** Bang Phlat Ball Noodle

**F:** Bang Phlat MRT Station



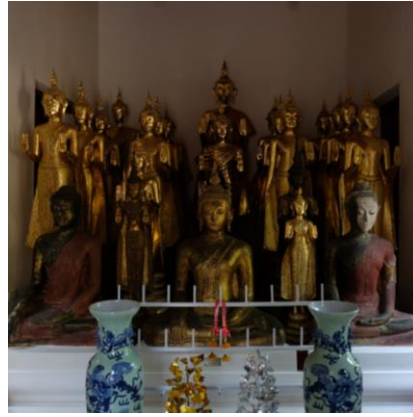
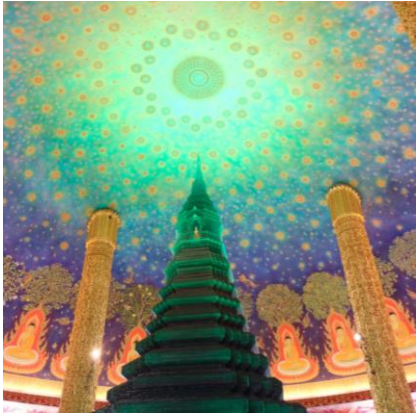
## Bang Phai Station

---

Chill by the river and discover the  
city's hidden gems







Exit  
**1**

- Wat Paknam: **950 M.**
- Wat Absonsawan Worawihan: **1 KM.**
- Chao Pho Fai Shrine: **900 M.**

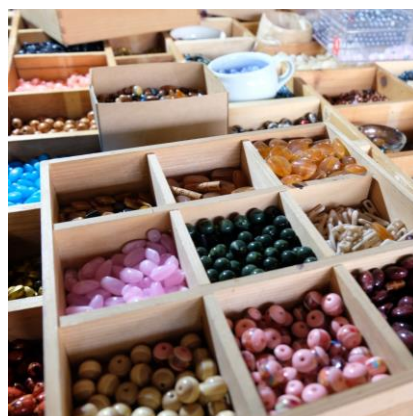


**Bang Phai  
Station**



Exit  
**4**

- Bang Luang Canal Community: **850 M.**
- Guay Tiew Yood Boi: **1.5 KM**
- The Artist's House: **1 KM.**
- Auntie Noolek Mango and Sticky Rice & Guay Jub Nam Kon Bang Luang Canal: **1.5 KM**
- Wat Kamphaeng Bangchak: **850 M.**







Exit  
**1**

## Wat Paknam

 950 m.

A focal point for Buddhists' hearts and souls near Bang Phai station.

Be mesmerized by

Maha Ratcha Mongkol Great Pagoda, with its 800 magnificent layers.

Pay respect to the Buddha's relics and worship the temple's very own

Luang Pu Sodh Candasaro.



# Wat Absonsawan Worawihan

Exit  
**1**



A historically significant temple with an eye-catching mix of Thai and Chinese architecture and 28 stunning Buddha images clustered together.





Exit

**1**

## Chao Pho Fai Shrine



900 m.

An ancient shrine, a symbol of faith.

Exit

**4**

## Wat Kamphaeng Bangchak



850 m.

This temple was locked down for more than 80 years. Now it is ready for you to explore its history and marvel at the ancient architecture of this renovated archeological site.



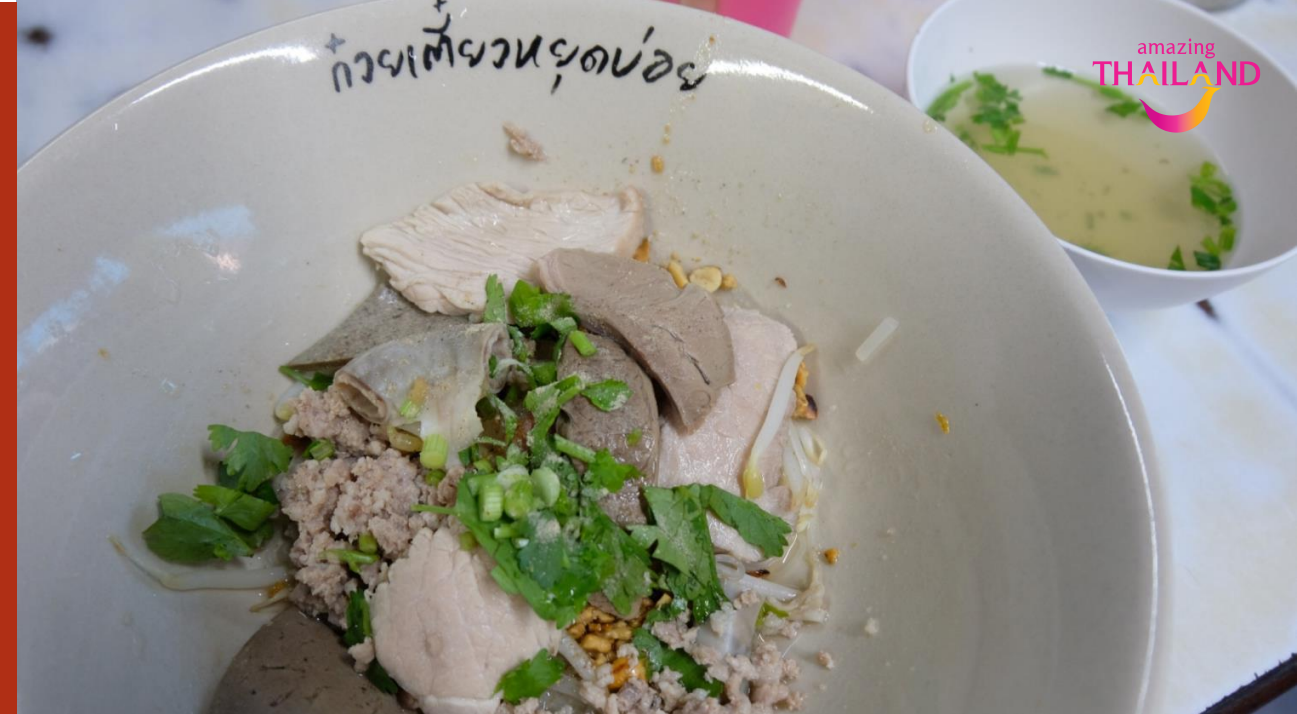


# Guay Tiew Yood Boi

Exit  
**4**

 1.5 km.

What makes this noodle place different from others is its amusing name. Given that it means “ a noodle shop that is often closed”, just being given the opportunity to try out these great tasting noodles is a blessing in itself!



amazing  
**THAILAND**



Exit  
**4**

## Auntie Noolek Mango and Sticky Rice & Guay Jub Nam Kon Bang Luang Canal

 1.5 km.

Guay Jub Nam Kon (rolled noodles in rich chunky pork soup) and mango and sticky rice are Bang Luang canal's finest treats. Get ready to eat like a local!





Exit  
**4** Bang Luang Canal  
Community

 850 m.

---

Experience the charm of an ancient lifestyle by the river along Bang Luang Canal. This cultural attraction will whisk you back to Ayutthaya era.



Exit  
**4** The Artist's House

 1.5 km.

---

All types of evocative art can be found here in "The Artist's House." It is an old hip-roofed, L-shaped wooden house surrounding a square-based stupa with three intended corners. The property is owned by an old goldsmith family and is a must-visit for visiting art lovers.



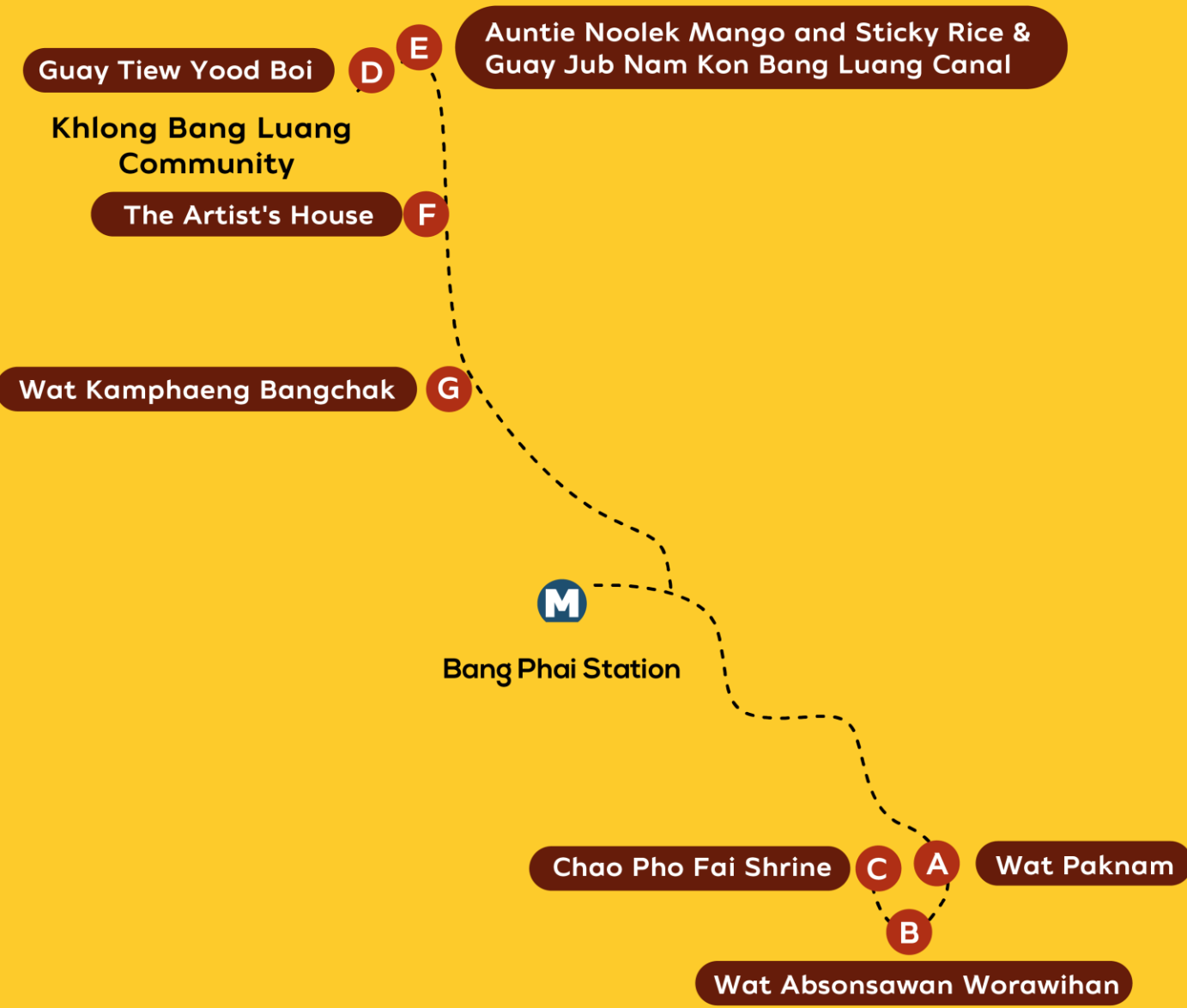
Exit  
**4** Khlong Bang Luang  
Museum

 1 km.

---

Reminisce about the past and everyday life with Khlong Bang Luang museum's collection of everyday objects from Thai life.





## Route Guide

- A:** Wat Paknam
- B:** Wat Absonsawan Worawihan
- C:** Chao Pho Fai Shrine
- D:** Guay Tiew Yood Boi
- E:** Auntie Noolek Mango and Sticky Rice & Guay Jub Nam Kon Bang Luang Canal
- F:** The Artist's House
- G:** Wat Kamphaeng Bangchak



## Itsaraphap Station

---

Stroll and soak up  
the beauty of the Old Town area

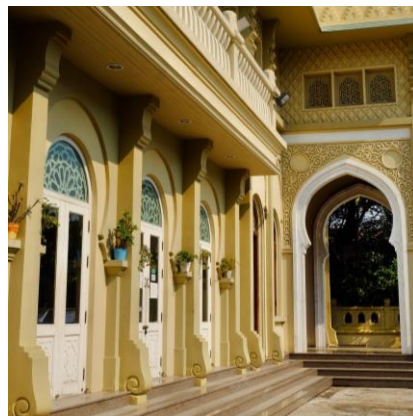




Itsaraphap MRT Station is one of the four most beautiful MRT stations in Thailand. The ticket booths are elegantly decorated with an illuminated golden Hong (A mythical Thai swan), drawing inspiration from the Hongs which adorn Wat Hong Rattanaram Ratchaworawihan, a local temple. Itsaraphap Station is also the first station in Thonburi and is linked to Phra Nakhon' Sanam Chai Station by a tunnel 30 metres below the Chao Phraya river. Convenient as well as impressive!







Exit  
**1**

- Khao Moo Tod Wat Arun: **900 M.**
- Khanom Bueang Wat Arun : **700 M.**
- Wat Hong Rattanaram Ratchaworawihan: **600 M.**
- Ton Son Mosque: **700 M.**



Itsaraphap  
**Station**



Exit  
**2**

- Sali Thip Mango Sticky Rice: **300 M.**
- Rung Rueang Phochana: **120 M.**
- Calm back home – café and room: **220 M.**
- Wat Arun Ratchawararam Ratchawaramahawihan: **950 M.**
- Wat Ratchasittharam Ratchaworawihan: **200 M.**







Exit  
**1**

## Wat Hong Rattanaram Ratchaworawihan

 600 m.

Visit the biggest and most beautiful ordination hall in the Thonburi area and find the hidden Hong symbols that inspired the design of the new Itsaraphap MRT Station.



# Ton Son Mosque



700 m.

Exit  
**1**

A Muslim community hidden in a not-so-secret location with a 400-year-old Sunni mosque, the oldest of its kind in Bangkok.





# Wat Arun Ratchawararam Ratchawaramahawihan

Exit  
2

 950 m.

Appreciate the beauty of the spectacular “Prangs” at this well known temple by the Chao Phraya river. As a tribute to their majesty and importance these ornate spires have been featured on the flip side of the 10-baht coin.



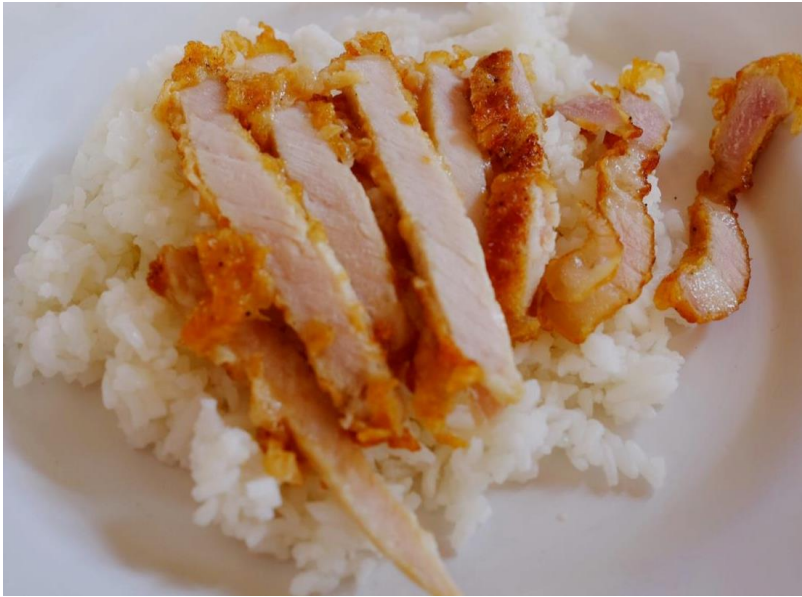
Exit  
2

# Wat Ratchasittharam Ratchaworawihan

 200 m.

Pay respect to Phra Buddha Chularak, the presiding Buddha image and marvel at some fascinating Thai art at this royal monastery.





Exit  
**2** Khao Moo Tod  
Wat Arun

 900 m.

A quick-serve, budget -priced fried pork and rice dish that's not short on flavour. A tasty plateful for just 20 baht!



Exit  
**2** Khanom Bueang  
Wat Arun

 700 m.

This Khanom Bueang vendor has been serving yummy Thai crepes bulging with sweet and savoury fillings for over 40 years now.



Exit  
**2** Rung Rueang  
Phochana

 120 m.

This vintage restaurant offering scrumptious dishes has a great reputation among both dedicated foodies and intrigued passers by.





Exit  
**2**

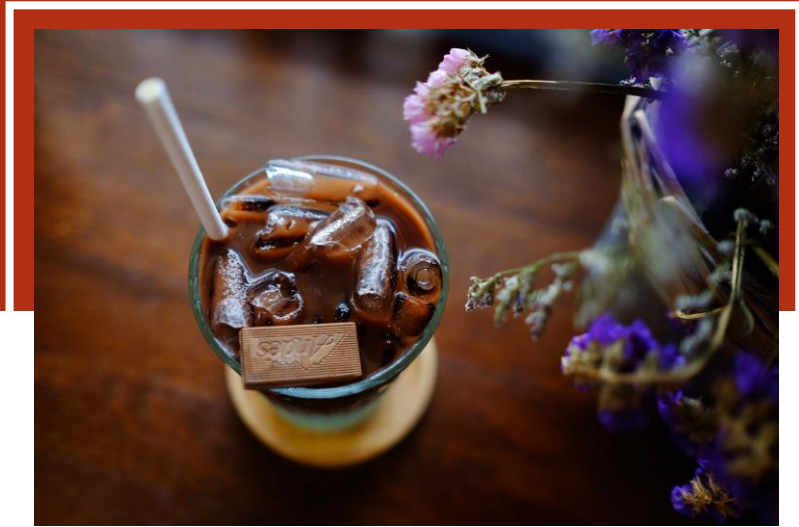
## Sali Thip Mango Sticky Rice

 300 m.

---

This is the legendary mango sticky rice shop, serving luscious sticky rice, creamy coconut milk and ripe mango slices straight out of the orchard for the past 60 years.





Exit  
**2**

## Calm back home - cafe and room

 220 m.

This cozy and calm café certainly lives up to its name. Drop in for coffee and bakery items with your favorite book and you'll feel just like you're at home.





# Route Guide

- A:** Wat Hong Rattanaram  
Ratchaworawihan
- B:** Ton Son Mosque
- C:** Wat Arun Ratchawararam  
Ratchawaramahawihan
- D:** Khao Moo Tod Wat Arun
- E:** Na Wang Derm Steak
- F:** Sali Thip Mango Sticky Rice
- G:** Rung Rueang Phochana
- H:** Calm back home - cafe and room
- I:** Wat Ratchasittharam  
Ratchaworawihan





## Fai Chai Station

Chill and chow down  
at Fai Chai Station







Exit  
**1**

- Wang Lang Market: **2 KM.**
- Wat Rakhankhositaram Woramahaviharn: **2.5KM**
- Wat Dong Mun Lek Beef Noodle: **240 M.**
- Yimsoo Café: **2.6 KM.**
- National Museum of Royal Barges: **3 KM.**
- 342 Bar: **2.1 KM.**
- Guay Jub Yuen Phuen: **1.3 KM.**
- N10 Café: **2.1 M.**



**Fai Chai  
Station**



Exit  
**2**

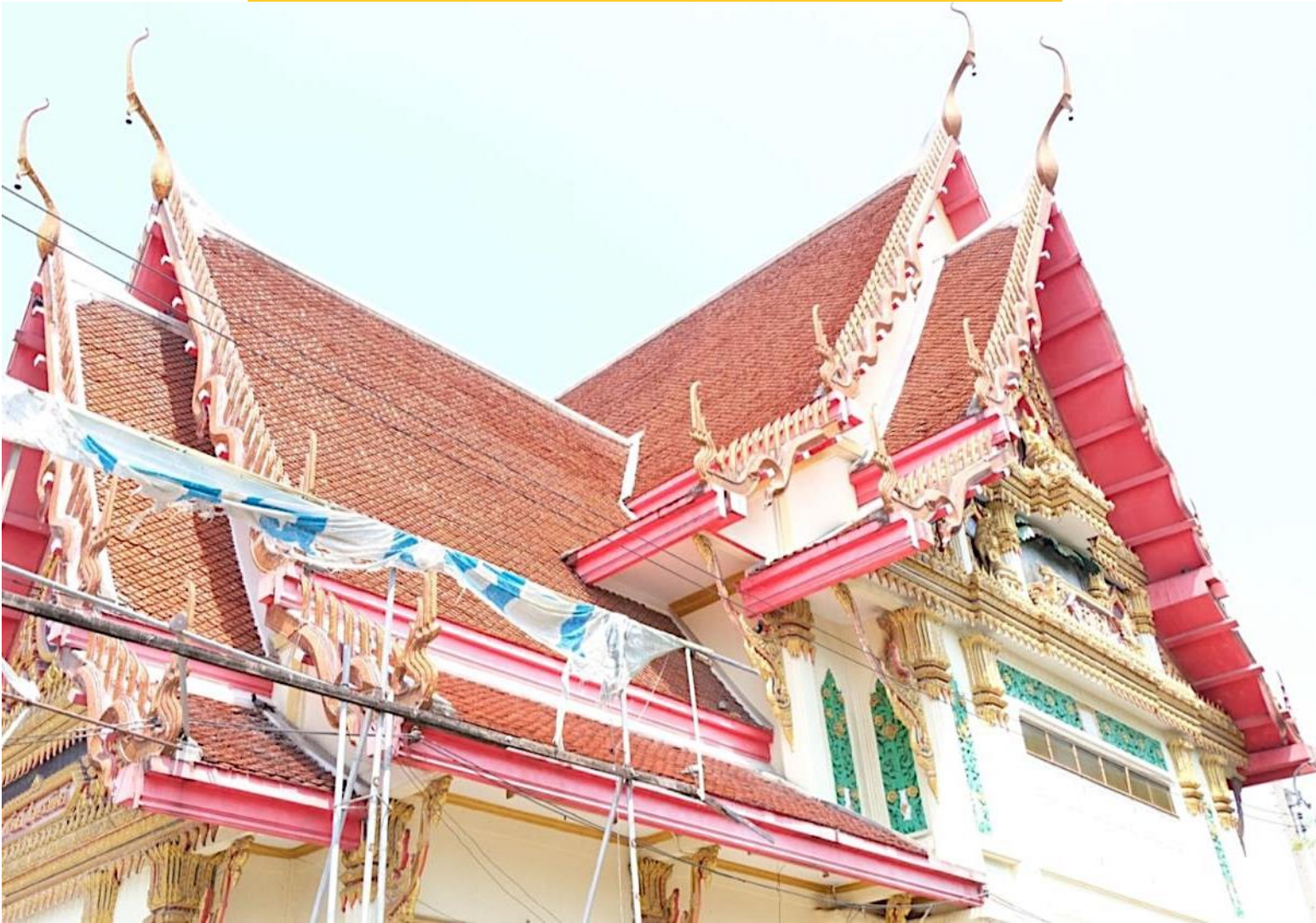
- Easy Eat Café **300 M.**



Exit  
**3**

- Wat Ruak Suttharam: **500 M.**





Exit  
**3**

## Wat Ruak Suttharam

 500 m.

---

Visit this ancient temple of the Rattanakosin Kingdom and pay homage to stunning Buddha images from the Sukhothai era.



Exit  
**2**


## Easy Eat Cafe'

 300 m.

Sip your coffee, enjoy your meal and listen to some great tunes in a snug atmosphere in this clean white café hidden away in the charming community of Fai Chai junction, Kanchanaphisek Road.

## Yimsoo Cafe'

Exit  
**1**

 2.6 km.

A warm, welcoming café with a purpose, run by the Universal Foundation for Persons with Disabilities. Your simple cup of coffee means the world to people with disabilities. Happiness guaranteed.







Exit

**1**

## N10 Cafe'



2.1 km.

---

Come and find inspiration at this chilled out café while taking in an indescribable riverside sunset.



Exit

**1**

## 342 Bar



2.1 km.

---

Choose your favorite tittle and enjoy charming, panoramic views of the Chao Phraya river and the timeless architecture of Phra Nakhon in the great atmosphere of this rooftop bar.



# Wat Dong Mun Lek Beef Noodle

Exit  
**1**

 240 m.

Beef lovers nationwide sing the praises of this legendary 80 year old, beef noodle vendor.



amazing  
THAILAND



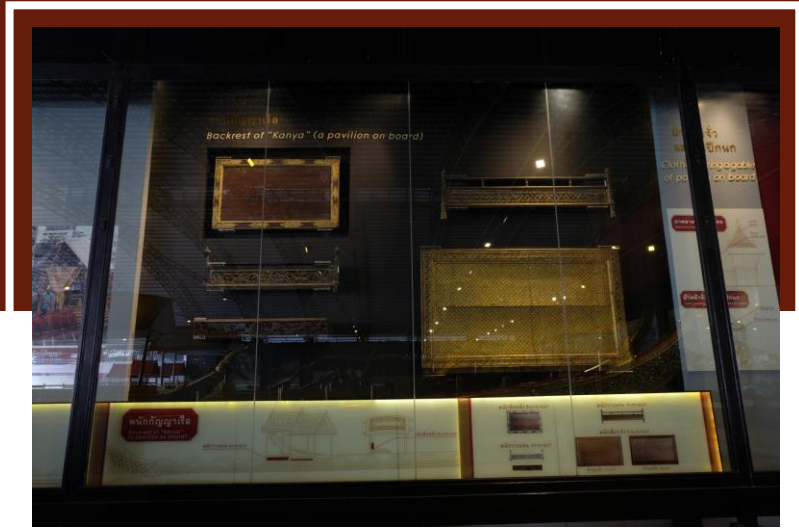
Exit  
**1**

## Guay Jub Yuen Phuen

 1.3 km.

Unconditionally, irresistibly delicious! This is the legendary, 40-year-old Guay Jub and crispy pork belly of Phran Nok aka Guay Jub Jor Sor Roi.





Exit  
**1**

## National Museum of Royal Barges

 3 km.

Be dazzled and charmed by the intricate beauty of the royal barges and the craftsmanship of the marine artists and learn the history and cultural significance of the Royal Barge Procession



## Wat Rakhangkositaram Woramahaviharn

Exit  
**1**



Pay respect to Phra Prathan Yim Rub Fah and Somdej Toh by chanting the Jinapanjara Gatha incantation and pray that your success and prosperity is as clear and far reaching as the chimes of this temple's bells!







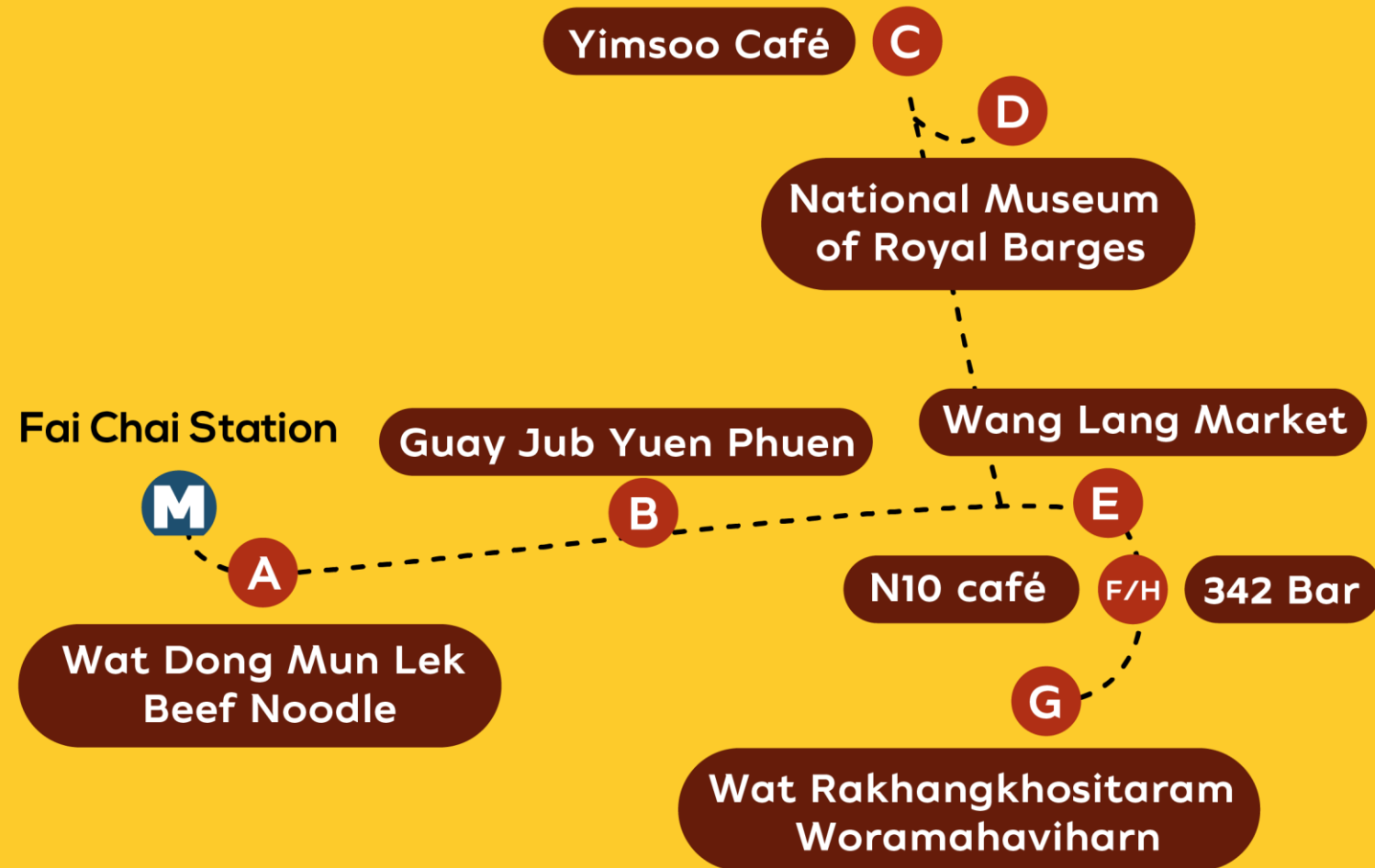
Exit  
**1**

## Wang Lang Market

 2.1 km.

This market has everything foodies could wish for, from street food stalls to high-end restaurants and riverside cafés serving savouries and sweets





## Route Guide

**A:** Wat Dong Mun Lek Beef Noodle

**B:** Guay Jub Yuen Phuen

**C:** Yimsoo Café

**D:** National Museum of Royal Barges

**E:** Wang Lang Market

**F:** N10 café

**H:** 342 Bar

**G:** Wat Rakhankhositaram  
Woramahaviharn



amazing  
THAILAND

The word "amazing" is written in a lowercase, pink, sans-serif font. Below it, the word "THAILAND" is written in a larger, uppercase, pink, sans-serif font. The letters "A", "I", and "L" in "THAILAND" are partially overlaid by a stylized graphic of a smile. This graphic consists of two small, upward-curving lines above the letters, and a larger, downward-curving line below them, all with a gradient from pink to orange.